



Research Article

## PHYLOGENETIC ANALYSIS OF SNAKE USING CYTOCHROME B GENE SEQUENCE

\*Anita S. Jadhav

Department of Zoology, ICLES' Motilal Jhunjunwala College of Arts, Science and Commerce,  
Vashi Navi, Mumbai, Maharashtra, India

**Article History:** Received 12<sup>th</sup> March 2021; Accepted 22<sup>nd</sup> April 2021; Published 30<sup>th</sup> April 2021

### ABSTRACT

Phylogenetic analysis of two species of snake *Eryxcolubrinus loveridgei* and *Ptyas mucosus* was investigated using the gene encoding cytochrome b. The nucleotide sequences of complete and partial mtDNA cytochrome b were determined in numerous specimens. Sequence divergence between species and genera was evenly distributed in the cytochrome b gene but rather high compared to reports for other fish species. Phylogenetic analyses on complete cytochrome b were used to study the relationships among the considered species. The molecular phylogeny of sample was determined by analyzing cytochrome b gene sequences. On the basis of position of sequence of the given python sample in the phylogenetic tree, the sample showed closest similarity with *E. loveridgei* and *P. mucosus*.

**Keywords:** *Eryxcolubrinus loveridgei*, *Ptyasmucosus*, DNA sequence, Cytochrome b, Phylogenetic analysis.

### INTRODUCTION

DNA barcoding is a simple technique used to develop a large-scale system of classification that is broadly applicable across a wide variety of taxa. Molecular phylogenetics is the analysis of hereditary molecular differences, mainly in DNA sequences, to gain information on an organism's evolutionary relationships. Molecular phylogeny of snake was determined by analyzing cytochrome b gene. Phylogenies form the cornerstone of our understanding of evolutionary relationships between organisms and provide a historical basis for testing and inferring ecological and evolutionary processes. (Rieppel, 1988) provided useful historical reviews of progress in understanding snake phylogeny and classification. Hydrophiine or 'true' sea snakes are a diverse radiation of fully marine venomous species that belong to the same evolutionary lineage as venomous terrestrial elapids.

Snakes represent a taxonomically underdeveloped group of animals in India with a lack of experts and incomplete taxonomic descriptions being the main deterrents to advances in this area. Veterinary and forensic

science laboratories frequently encounter samples lacking any morphological details that make it impossible to identify them as meat, leather, bones, blood stains on clothes. Therefore, there is a need to determine the origin of anonymous biological traces. In addition, species identification represents a key aspect of biodiversity studies (Ardura *et al.*, 2011). The molecular markers and DNA sequencing have been taken as good markers to classify the taxonomy and phylogenetic relationships among species. The application of PCR technique has significantly improved the efficiency of laboratorial diagnostic procedures by allowing the in vitro amplification of a large number of DNA copies using a specific genomic region as template, followed by complementary techniques (Fajardo *et al.*, 2007). Since it only requires a small amount of template DNA, the PCR method has been particularly useful for the identification of species in suboptimal DNA samples like forensic samples and blood stains, also in archaeological remains and museum specimens owing to the highly degraded and fragmented nature of ancient DNA. Secular and morphological data sets will ultimately be necessary to develop a comprehensive phylogeny of snakes and each data source can make a unique contribution. On

\*Corresponding Author: Dr. Anita S. Jadhav, Department of Zoology, ICLES' Motilal Jhunjunwala College of Arts, Science and Commerce, Vashi Navi, Mumbai, Maharashtra, India. Email: [research.vlsr@gmail.com](mailto:research.vlsr@gmail.com)

one hand, molecular methods can provide large quantities of phylogenetically informative data. Although data have been plentiful, colubroid molecular phylogenies have been unstable due to their inherent sensitivity to taxon sampling (Kelly *et al.*, 2003; Kraus & Brown, 1998). On the other hand, only few morphological complexes have been analyzed thoroughly within snakes, and the paucity of broadly sampled morphological characters has prevented the compilation of a large morphological data matrix.

The cytochrome b gene has been proved as an efficient tool with high power of discrimination for species identification and characterization in both taxonomy and forensic science (Kuwayama & Ozawa, 2000; Saif *et al.*, 2012), and is also used in studies of molecular evolution (Prusak *et al.*, 2004). The gene length is 1140 bp and has some stable sequences which were used for suggestion of universal primers for typical PCR-based methods (Parson *et al.*, 2000). The application of DNA data to phylogenetic re-construction has led to the collection of diverse molecular data sets to test taxonomic hypotheses (Rose, 2005 & Archibald). This practice evidently leads to well-supported, highly resolved trees, compared with individual partitions. However, the acquisition of such data sets is an expensive and time-consuming process. If it is accepted that the best estimate of phylogeny is taken to be the simplest explanation of all the relevant data (i.e., the simultaneous analysis) (Miller *et al.*, 1997), the PB Sallows an evaluation of phylogenetic accuracy of all partitions. So, in the present study phylogenetic analysis of snake using cytochrome b gene sequence was investigated.

## MATERIAL AND METHODS

### Collection of Samples

Blood samples were also provided from the Mumbai Zoological Gardens, collected from individual live Sand boa snake and Rat snake encountered in and around residential areas. Ventral scale clip samples and shed skins were taken from captive held specimens of known geographic origin. Whole blood samples were collected aseptically in sterilized vacutainer tubes containing EDTA as anticoagulant, stored at -20°C until DNA extraction.

**Table 1.** Phylogenetic analysis of Sand boa.

S. No	Description	Max score	Max ident	Accession
1.	<i>Eryxcolubrinusloveridgei</i> cytochrome b (cytb) gene, mitochondrial gene encoding mitochondrial protein, partial cds	398	89%	U69812.1
2.	<i>Eryxconicus</i> cytochrome b (Cytb) gene, partial cds; mitochondrial	375	88%	GQ225658.1
3.	<i>Eryxcolubrinuscolubrinus</i> cytochrome b (cytb) gene, mitochondrial gene encoding mitochondrial protein, partial cds	348	86%	U69811.1
4.	<i>Eryxconicus</i> cytochrome b (cytb) gene, mitochondrial gene encoding	339	88%	U69817.1

## RESULTS AND DISCUSSION

### DNA extraction and quantification

DNA Extraction from 2-3 scale was carried out using Gen-Elute mammalian genomic DNA miniprep Kit (Sigma-Aldrich). Concentration of DNA was determined using UV-1800 spectrophotometer (Schimadzu Corporation). The DNA was stored at -20°C for further use.

### PCR amplification

PCR amplification was performed using Biometra thermal cycler. The PCR mixture contained 2.5µl of 10X buffer, 1µl of each primer (diluted 10 times), 2.5µl of 2.5mM of each dNTP, 2.5 Units of Taq DNA polymerase and 1µl Template DNA. Primers used for cytb region amplification were Snk-F: 5' TGAGGACAAATATCATTCTGAG 3' and Snk-R: -5' TAGGCGAATAGGAAGTATCA 3' (Dubey *et al.*, 2010). The PCR amplification cycle consisted of, a cycle of 5 min at 94 °C; 30 cycles of 45 sec at 94 °C, 45 sec at 45°C, 1 min and 30 sec at 72 °C; and 1 cycle of 5 min at 72 °C.

### Gel electrophoresis

Gel electrophoresis was performed using 1.0% agarose to analyze the size of amplified PCR product. The size obtained was approx. 431bp for cytochrome b region (Figure 4).

### DNA sequencing

The PCR product was purified using AxyPrepPCR Clean up kit (AP-PCR-50). It was further sequenced using Applied Biosystems 3730xl DNA Analyzer USA and chromatogram obtained. The primer used was Snk-F: 5' TGAGGACAAATATCATTCTGAG 3' as sequencing primer.

### Bioinformatics analysis

The DNA sequences were analyzed using online nBLAST (nucleotide Basic Local Alignment Search Tool) facility of National Center for Biotechnology Information (NCBI). The BLAST results (Table 1 & 2) were used to find out evolutionary relationship of snake. Altogether eleven sequences, including sample were used to generate phylogenetic tree. The tree had been generated in MEGA (Figure 1 & 2).

5.	mitochondrial protein, partial cds <i>Eryxjaculus</i> cytochrome b (cytb) gene, mitochondrial gene encoding mitochondrial protein, partial cds	309	87%	U69821.1
6.	<i>Eryxconicus</i> cytochrome b (cytb) gene, mitochondrial gene encoding mitochondrial protein, partial cds	307	88%	U69816.1
7.	<i>Epicratesmonensis</i> cytochrome b (cytb) gene, mitochondrial gene encoding mitochondrial protein, complete cds	294	84%	U69792.1
8.	<i>Epicratesmonensis</i> cytochrome b (cytb) gene, mitochondrial gene encoding mitochondrial protein, complete cds	294	84%	U69790.1
9.	<i>Morelia amethystina</i> cytochrome b (cytb) gene, mitochondrial gene encoding mitochondrial protein, partial cds	292	85%	U69847.1
10.	<i>Python regius</i> cytochrome b (cytb) gene, mitochondrial gene encoding mitochondrial protein, partial cds	285	84%	U69856.1

Sample no. Sand boa Gene Sequences: > Sand boa Snake, Sequence length: 367.

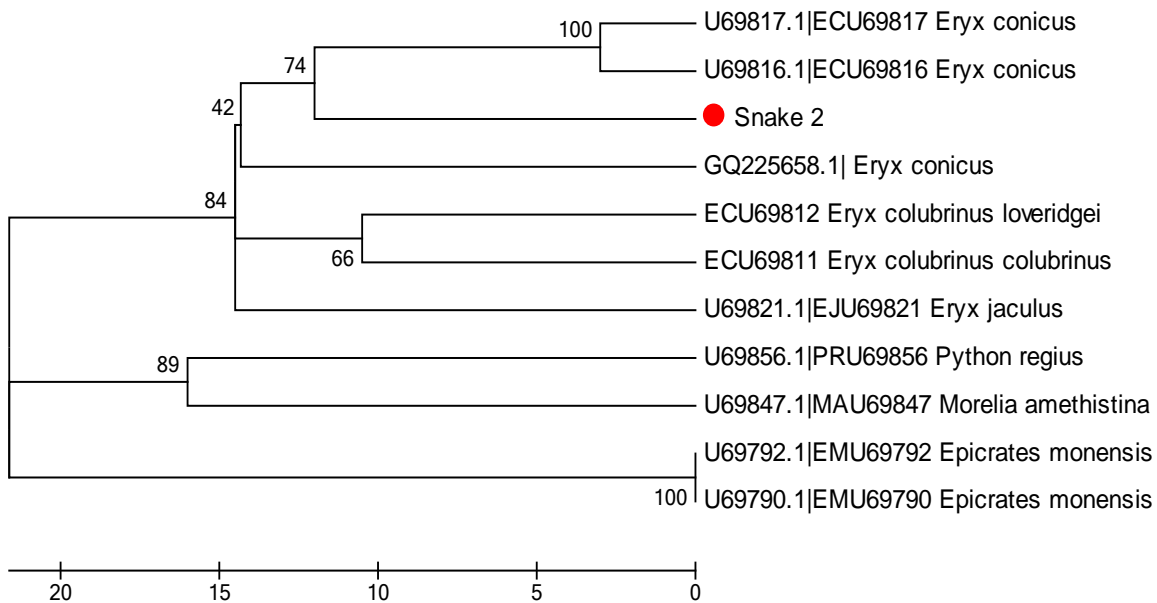


Figure 1. Phylogenetic tree for Sand boa.

Table 2. Phylogenetic analysis of Rat snake.

S.No	Description	Max score	Max identity	Accession no.
1.	<i>Ptyasmucosus</i> CAS 208434 cytochrome b (cytb) gene, complete cds; mitochondrial	392	89%	AF471054.1
2.	<i>Ptyasmucosus</i> cytochrome b (Cytb) gene, partial cds; mitochondrial	381	88%	GQ225655.1
3.	<i>Dinodonrufozonatum</i> LSUMZ 44977 cytochrome b (cytb) gene, complete cds; mitochondrial	243	83%	AF471063.1
4.	<i>Dinodonrufozonatum</i> isolate china cytochrome b (cytb) gene, partial cds; mitochondrial	220	82%	JF827672.1
5.	<i>Coluber constrictor</i> voucher KJI 3 cytochrome b gene, partial cds; mitochondrial	198	80%	EU180478.1
6.	<i>Hypsiglenajanitexana</i> voucher CAS 228960 mitochondrion, complete genome	193	80%	EU728592.1
7.	<i>Contiatenuis</i> voucher MVZ 232671 cytochrome b (cytb) gene, complete	189	80%	GU112395.1

	cds; mitochondrial			
8.	<i>Contiatenuis</i> voucher MVZ 208160 cytochrome b (cytb) gene, complete cds; mitochondrial	189	80%	GU112393.1
9.	<i>Contiatenuis</i> voucher MVZ 208158 cytochrome b (cytb) gene, complete cds; mitochondrial	189	80%	GU112392.1
10.	<i>Contiatenuis</i> voucher CAS 205652 cytochrome b (cytb) gene, complete cds; mitochondrial	189	80%	GU112385.1

Sample no. Rat snake Gene Sequences: >Snake Rat snake, Sequence length: 359.

AGGGGGAGGGGGGAGGAGGGGTGCTTCAATTTGGGGATACCAACTGCTAACCCGGTTGGTTGGGCCTACGG  
 TTTATCCTTCCGGGAGTATCATGTCAATGTCTCAATCCACATCATACTGCTTCACACAGAAGATCAAGCAAC  
 CCGCTAGGAACAAATTCAGACATGGACAAAATTCATTTACCCATACCCTCCACAAAGATATCCTAATA  
 CGAACGGTATTAATTACCATAATATTTACTATTATAGCATTACCCCAAACATAGGTGATGAGCCAGAAAAT  
 GTCTCAAAGCTAATCCAATAGTCGCACCACAACACATTAACCAGAAGGATACTTCCTAGTCGCCTAAGA

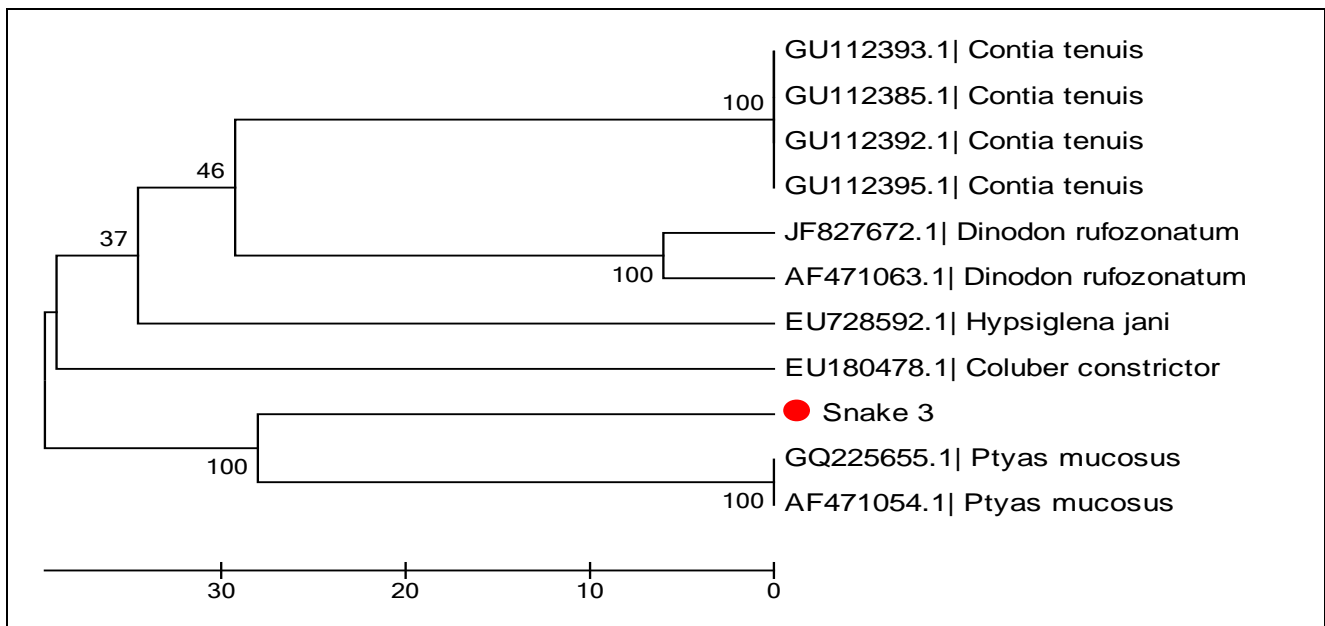


Figure 2. Phylogenetic tree for Rat snake.

Two recent molecular studies (Keogh *et al.*, 1998) [partial16S and cytochrome b mtDNA sequences]; [amino acid sequences of the venom proteins PLA2 and NXS]) have explored the phylogenetic relationships within the snake family Elapidae, a major group of venomous snakes containing nearly 300 species in approximately 60 genera (Golay *et al.*, 1993); herein we use Elapidae in the broad sense to include both terrestrial and marine species, whereas (Golay *et al.*, 1993) place the marine species in a separate family Hydrophiidae). The two studies agree that the marine and Australo-Melanesian species are collectively mono-phyletic. Initial phylogenetic analyses using maximum likelihood joined acrodonts with snakes instead of with iguanids. The affinities of snakes and

acrodonts were thus analyzed separately in subsequent analyses. Furthermore, the most fast-evolving taxa were removed by creating a distance matrix based on the mtREV+I+8 models and compared distances between each squamate taxon and the turtles. Any squamate taxon that had a distance of 1.0 or more was removed. The taxon sampling may have been compromised but it was only compromised within, not across, lineages. In addition, fast-evolving taxa only mask the true phylogenetic signal of the data and, as was evident, increase the likelihood of LBA (Baurain *et al.*, 2007). These results are congruent with previous phylogenetic studies with respect to the affinities of lizard lineages. These results support a recent mitogenomic study that also place snakes with the

“Laterata” (Kumazawa, 2007). These results are in contrast to nuclear gene studies that phylogenetic analysis of snake like *Eryxcolubrinus loveridgei* and *Ptyas mucosus*.

## CONCLUSION

The molecular phylogeny of sample had been determined by analyzing cytochrome b gene sequence. On the basis of position of sample sequence of given snake samples in the phylogenetic tree, the following results were observed.

## ACKNOWLEDGMENT

The authors express sincere thanks to the head of the Department of Zoology, ICLES’ Motilal Jhunjhunwala College of Arts, Science and Commerce, Vashi Navi, Mumbai, Maharashtra, India for the facilities provided to carry out this research work.

## REFERENCES

- Ardura, A., Planes, S., & Garcia-Vazquez, E. (2011). Beyond biodiversity: fish metagenomes. *PLoS One*, 6(8), e22592.
- Baurain, D., Brinkmann, H., & Philippe, H. (2007). Lack of resolution in the animal phylogeny: closely spaced cladogeneses or undetected systematic errors? *Molecular Biology and Evolution*, 24(1), 6-9.
- Dubey, B., Meganathan, P., & Haque, I. (2010). Molecular identification of three Indian snake species using simple PCR-RFLP method. *Journal of Forensic Sciences*, 55(4), 1065-1067.
- Fajardo, V., González, I., López-Calleja, I., Martín, I., Rojas, M., Garcia, T., Martín, R. (2007). PCR identification of meats from chamois (*Rupicapra rupicapra*), pyrenean ibex (*Capra pyrenaica*), and mouflon (*Ovis ammon*) targeting specific sequences from the mitochondrial D-loop region. *Meat science*, 76(4), 644-652.
- Golay, P., Smith, H. M., Broadley, D. G., Dixon, J. R., McCarthy, C., Rage, J.C., Toriba, M. (1993). *Endoglyphs and other major venomous snakes of the world: a checklist*. Geneva: Azemiops SA Herpetological Data Center.
- Kelly, C. M., Barker, N. P., & Villet, M. H. (2003). Phylogenetics of advanced snakes (Caenophidia) based on four mitochondrial genes. *Systematic Biology*, 52(4), 439-459.
- Keogh, J. S., Shine, R., & Donnellan, S. (1998). Phylogenetic Relationships of Terrestrial Australo-Papuan Elapid Snakes (Subfamily Hydrophiinae) Based on Cytochromeband 16S rRNA Sequences. *Molecular Phylogenetics and Evolution*, 10(1), 67-81.
- Kraus, F., & Brown, W. M. (1998). Phylogenetic relationships of colubroid snakes based on mitochondrial DNA sequences. *Zoological Journal of the Linnean Society*, 122(3), 455-487.
- Kumazawa, Y. (2007). Mitochondrial genomes from major lizard families suggest their phylogenetic relationships and ancient radiations. *Gene*, 388(1-2), 19-26.
- Kuwayama, R., & Ozawa, T. (2000). Phylogenetic relationships among European red deer, wapiti, and sika deer inferred from mitochondrial DNA sequences. *Molecular Phylogenetics and Evolution*, 15(1), 115-123.
- Miller, J. S., Brower, A. V., & Desalle, R. (1997). Phylogeny of the neotropical moth tribe Josiini (Notodontidae: Dioptinae): comparing and combining evidence from DNA sequences and morphology. *Biological Journal of the Linnean Society*, 60(2), 297-316.
- Parson, W., Pegoraro, K., Niederstätter, H., Föger, M., & Steinlechner, M. (2000). Species identification by means of the cytochrome b gene. *International Journal of Legal Medicine*, 114(1), 23-28.
- Pereira, F., Carneiro, J., & Amorim, A. (2008). Identification of species with DNA-based technology: current progress and challenges. *Recent Patents on DNA & Gene Sequences (Discontinued)*, 2(3), 187-200.
- Prusak, B., Grzybowski, G., & Ziêba, G. (2004). Taxonomic position of *Bison bison* (Linnaeus 1758) and *Bison bonasus* (Linnaeus 1758) as determined by means of cytb gene sequence. *Animal Science Papers and Reports*, 22(1), 27-35.
- Rieppel, O. (1988). A review of the origin of snakes. *Evolutionary Biology*, 37-130.
- Rose, K. D. & Archibald, J. D. (2005). *The rise of placental mammals: origins and relationships of the major extant clades*. Baltimore, London: Johns Hopkins University Press, pp. 259.
- Saif, R., Babar, M. E., Awan, A. R., Nadeem, A., Hashmi, A.S., & Hussain, T. (2012). DNA fingerprinting of Pakistani buffalo breeds (Nili-Ravi, Kundi) using microsatellite and cytochrome b gene markers. *Molecular Biology Reports*, 39(2), 851-856.